

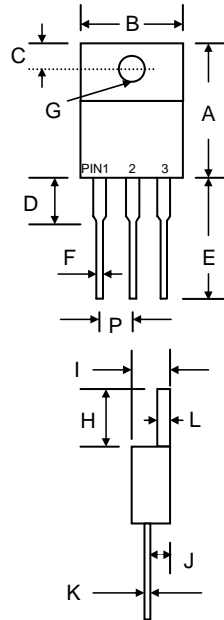
Features

- Schottky Barrier Chip
- Ideally Suited for Automatic Assembly
- Low Power Loss, High Efficiency
- For Use in Low Voltage Application
- Guard Ring Die Construction
- Plastic Case Material has UL Flammability Classification Rating 94V-O

Mechanical Data

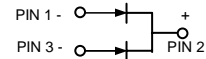
- Case: ITO-220AB, Molded Plastic
- Terminals: Plated Leads Solderable per MIL-STD-202, Method 208
- Polarity: See Diagram
- Mounting Position: Any
- **Lead Free: For RoHS / Lead Free Version**

ITO-220AB



ITO-220AB		
Dim	Min	Max
A	14.50	15.50
B	9.50	10.50
C	2.55	2.90
D	3.30	4.30
E	13.00	14.00
F	0.30	0.90
G	3.00 Ø	3.80 Ø
H	6.30	7.30
I	4.20	4.80
J	2.50	2.90
K	0.45	0.70
L	2.50	3.10
P	2.35	2.75

All Dimensions in mm



Maximum Ratings and Electrical Characteristics @ $T_A=25^\circ\text{C}$ unless otherwise specified

Single Phase, half wave, 60Hz, resistive or inductive load.
For capacitive load, derate current by 20%.

Characteristic	Symbol	MBRF 3040 CT	MBRF 3045 CT	MBRF 3050 CT	MBRF 3060 CT	MBRF 30100 CT	MBRF 30150 CT	MBRF 30200 CT	Unit	
Peak Repetitive Reverse Voltage	V_{RRM}									
Working Peak Reverse Voltage	V_{RWM}	40	45	50	60	100	150	200	V	
DC Blocking Voltage	V_R									
RMS Reverse Voltage	$V_{R(RMS)}$	28	31	35	42	70	105	140	V	
Average Rectified Output Current @ $T_L = 75^\circ\text{C}$ (Note 1)	I_O	30.0							A	
Non-Repetitive Peak Forward Surge Current 8.3ms Single half sine-wave superimposed on rated load (JEDEC Method)	I_{FSM}	200							A	
Forward Voltage @ $I_F = 15\text{A}$	V_{FM}	0.70		0.80			0.85	0.92	V	
Peak Reverse Current @ $T_A = 25^\circ\text{C}$ At Rated DC Blocking Voltage @ $T_A = 100^\circ\text{C}$	I_{RM}	0.1 20							mA	
Typical Junction Capacitance (Note 2)	C_j	350		280			200		pF	
Typical Thermal Resistance (Note 1)	$R_{\theta JA}$	3.0				2.0			$^\circ\text{C/W}$	
Operating and Storage Temperature Range	T_j, T_{STG}	-55 to +150					-55 to +175			$^\circ\text{C}$

Note: 1. Valid provided that leads are kept at ambient temperature at a distance of 9.5mm from the case.
2. Measured at 1.0 MHz and applied reverse voltage of 4.0V D.C.

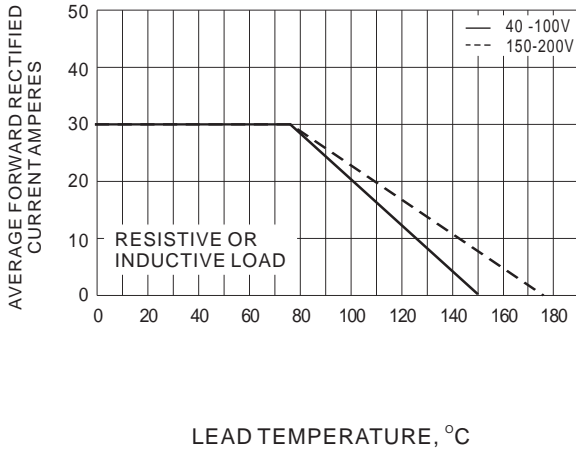


Fig.1- FORWARD CURRENT DERATING CURVE

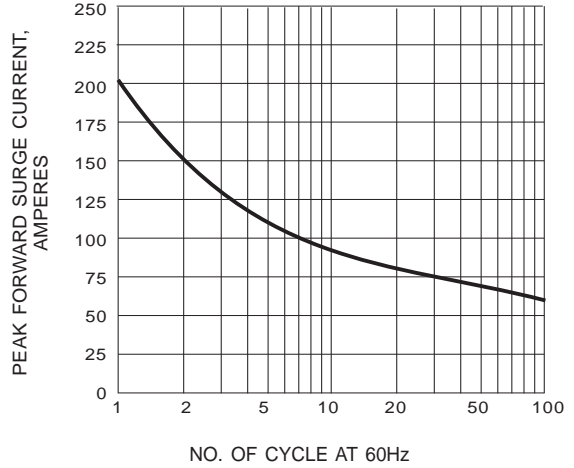


Fig.2- MAXIMUM NON-REPETITIVE SURGE CURRENT

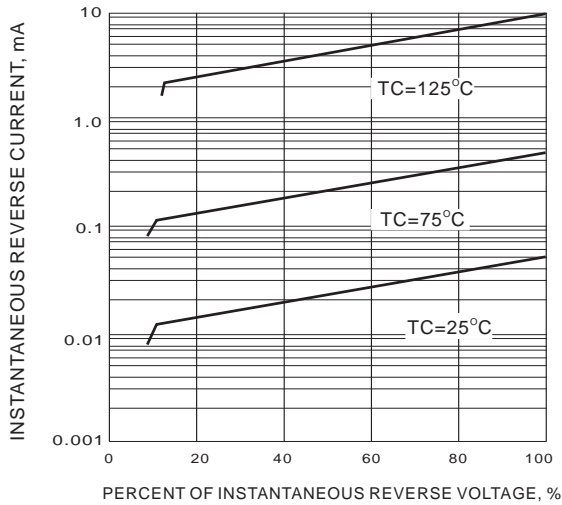


Fig.3- TYPICAL REVERSE CHARACTERISTIC

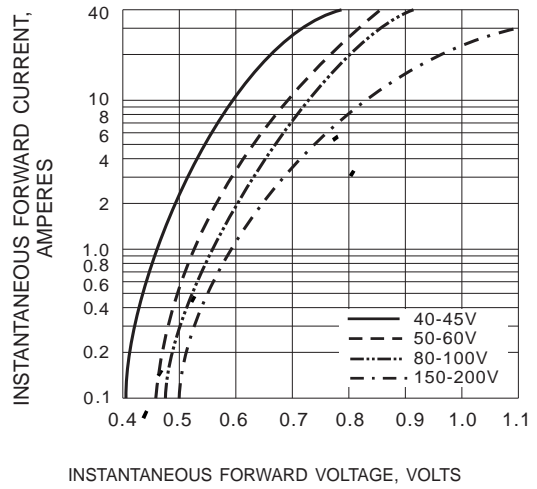


Fig.4- TYPICAL INSTANTANEOUS FORWARD CHARACTERISTIC