

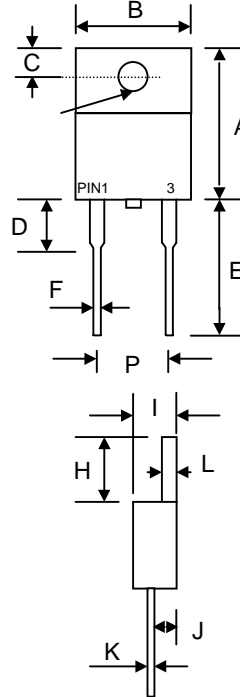
#### Features

- Schottky Barrier Chip
- Ideally Suited for Automatic Assembly
- Low Power Loss, High Efficiency
- Surge Overload Rating to 1 0 0A Peak
- For Use in Low Voltage Application
- Guard Ring Die Construction
- Plastic Case Material has UL Flammability Classification Rating 94V-O

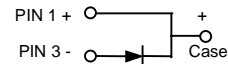
#### Mechanical Data

- Case: TO-220AC, Molded Plastic
- Terminals: Plated Leads Solderable per MIL-STD-202, Method 208
- Polarity: See Diagram
- Mounting Position: Any
- **Lead Free: For RoHS / Lead Free Version**

#### TO-220AC



TO-220AC		
Dim	Min	Max
A	13.90	15.90
B	9.80	10.70
C	2.54	3.43
D	3.56	4.56
E	12.70	14.73
F	0.51	1.14
G	3.55 Ø	4.09 Ø
H	5.75	6.85
I	3.56	4.83
J	2.03	2.92
K	0.30	0.64
L	1.10	1.40
P	4.80	5.35
All Dimensions in mm		



#### Maximum Ratings and Electrical Characteristics @ $T_A=25^\circ\text{C}$ unless otherwise specified

Single Phase, half wave, 60Hz, resistive or inductive load.  
For capacitive load, derate current by 20%.

Characteristic	Symbol	MBR 1040	MBR 1045	MBR 1050	MBR 1060	MBR 1080	MBR 10100	MBR 10150	MBR 10200	Units
Peak Repetitive Reverse Voltage	$V_{RRM}$									
Working Peak Reverse Voltage	$V_{RWM}$	40	45	50	60	80	100	150	200	V
DC Blocking Voltage	$V_R$									
RMS Reverse Voltage	$V_{R(RMS)}$	28	31	35	42	56	70	105	140	V
Average Rectified Output Current @ $T_L=75^\circ\text{C}$ (Note 1)	$I_o$	10.0								A
Non-Repetitive Peak Forward Surge Current 8.3ms Single half sine-wave superimposed on rated load (JEDEC Method)	$I_{FSM}$	100				120				A
Forward Voltage @ $I_F=10\text{A}$	$V_{FM}$	0.70		0.80		0.85		0.92		V
Peak Reverse Current @ $T_A=25^\circ\text{C}$ At Rated DC Blocking Voltage @ $T_A=100^\circ\text{C}$	$I_{RM}$	0.1 20								mA
Typical Junction Capacitance (Note 2)	$C_j$	350		280		200				pF
Typical Thermal Resistance (Note 1)	$R_{\theta JA}$	3.5				2.0				$^\circ\text{C/W}$
Operating and Storage Temperature Range	$T_j, T_{STG}$	-55 to +150								$^\circ\text{C}$

Note: 1. Valid provided that leads are kept at ambient temperature at a distance of 9.5mm from the case.  
2. Measured at 1.0 MHz and applied reverse voltage of 4.0V D.C.

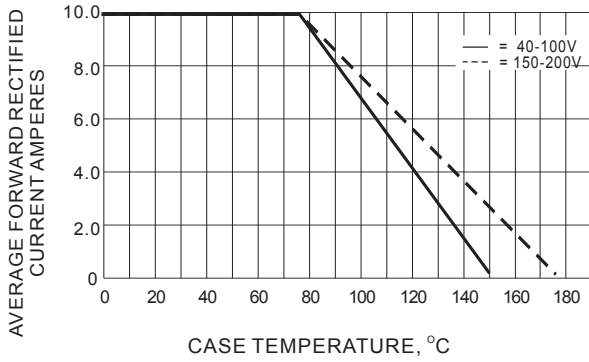


Fig.1- FORWARD CURRENT DERATING CURVE

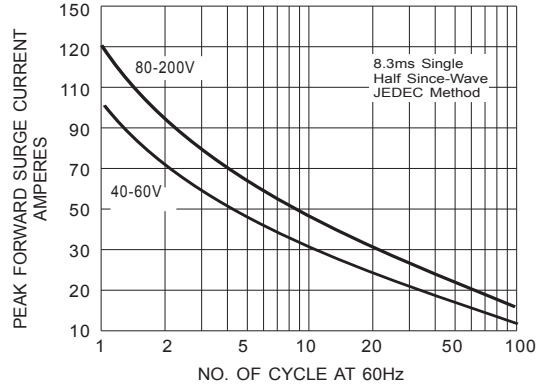


Fig.2- MAXIMUM NON - REPETITIVE SURGE CURRENT

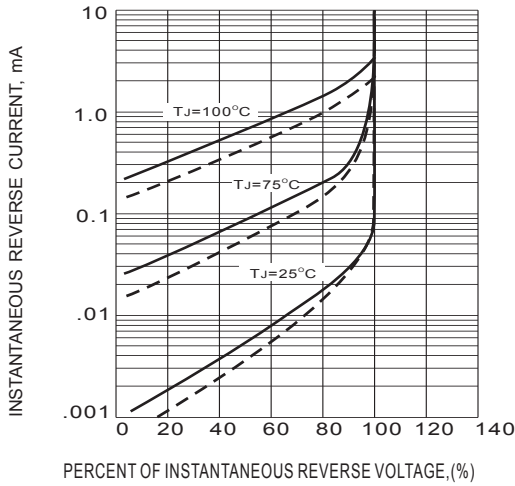


Fig.3- TYPICAL REVERSE CHARACTERISTICS

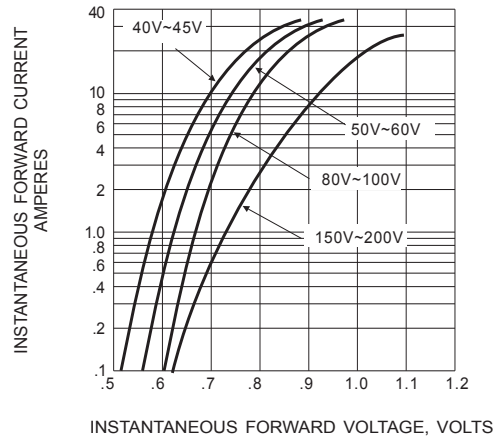


Fig.4- TYPICAL INSTANTANEOUS FORWARD CHARACTERISTICS