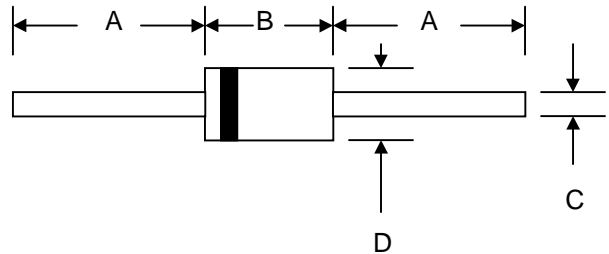


Features

- Diffused Junction
- Low Forward Voltage Drop
- High Current Capability
- High Reliability
- High Surge Current Capability

Mechanical Data

- Case: Molded Plastic
- Terminals: Plated Leads Solderable per MIL-STD-202, Method 208
- Polarity: Cathode Band
- Weight: 0.34 grams (approx.)
- Mounting Position: Any
- Marking: Type Number
- **Lead Free: For RoHS / Lead Free Version**



DO-41		
Dim	Min	Max
A	24.5	—
B	4.06	5.21
C	0.60	0.80
D	2.00	3.00
All Dimensions in mm		

Maximum Ratings and Electrical Characteristics @ $T_A=25^\circ\text{C}$ unless otherwise specified

Single Phase, half wave, 60Hz, resistive or inductive load.
For capacitive load, derate current by 20%.

Characteristic	Symbol	BYV26A	BYV26B	BYV26C	Unit
Peak Repetitive Reverse Voltage	V_{RRM}				V
Working Peak Reverse Voltage	V_{RWM}	200	400	600	
DC Blocking Voltage	V_R				
RMS Reverse Voltage	$V_{R(RMS)}$	140	280	420	V
Average Rectified Output Current (Note 1)	I_O		1.0		A
		@ $T_A = 55^\circ\text{C}$			
Non-Repetitive Peak Forward Surge Current 8.3ms Single half sine-wave superimposed on rated load (JEDEC Method)	I_{FSM}		30		A
Forward Voltage @ $I_F = 1.0\text{A}$	V_{FM}		2.5		V
Peak Reverse Current @ $T_A = 25^\circ\text{C}$	I_{RM}		5.0		μA
At Rated DC Blocking Voltage @ $T_A = 100^\circ\text{C}$			150		
Reverse Recovery Time (Note 2)	t_{rr}		35		nS
Typical Junction Capacitance (Note 3)	C_j		45		pF
Typical Thermal Resistance (Note 4)	$R_{\theta JL}$		100		$^\circ\text{C/W}$
Operating Temperature Range	T_j		-65 to +150		$^\circ\text{C}$
Storage Temperature Range	T_{STG}		-65 to +150		$^\circ\text{C}$

- Note: 1. Leads maintained at ambient temperature at a distance of 9.5mm from the case
 2. Measured with $I_F = 0.5\text{A}$, $I_R = 1.0\text{A}$, $IRR = 0.25\text{A}$. See figure 5.
 3. Measured at 1.0 MHz and applied reverse voltage of 4.0V D.C.
 4. Thermal resistance from junction to ambient.

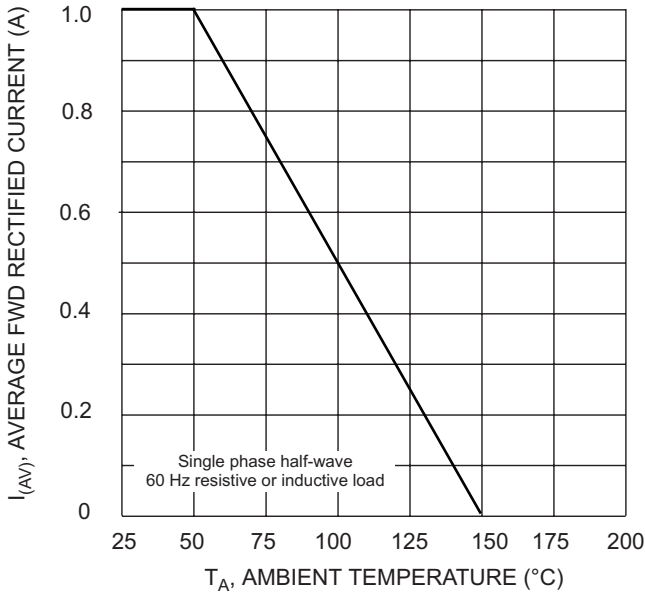


Fig. 1 Forward Derating Curve

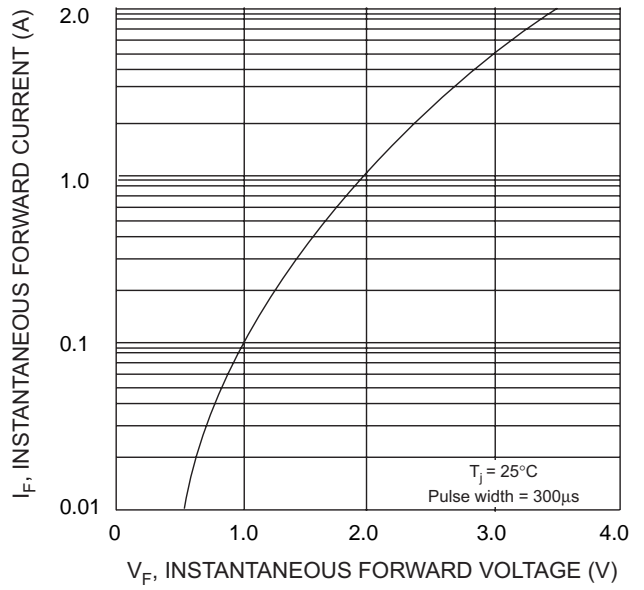


Fig. 2 Typical Forward Characteristics

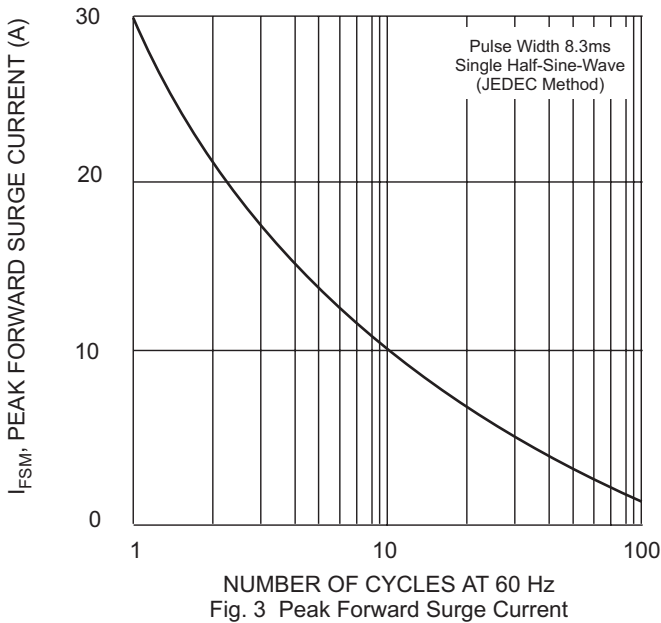


Fig. 3 Peak Forward Surge Current

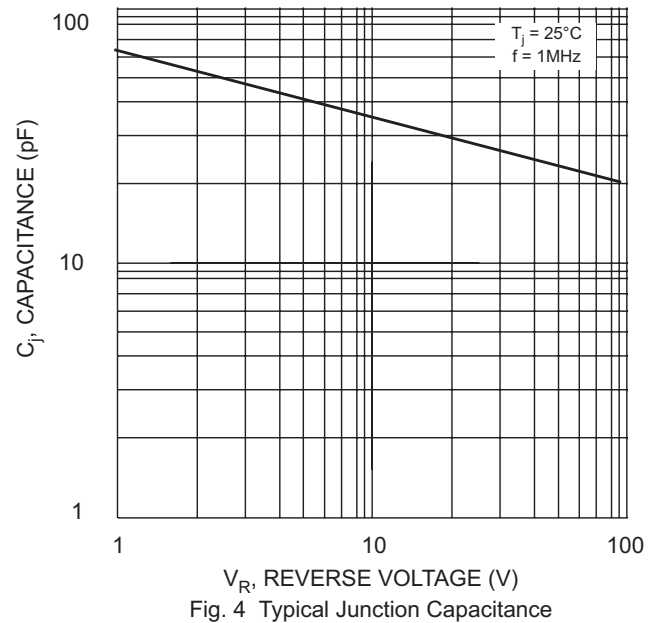
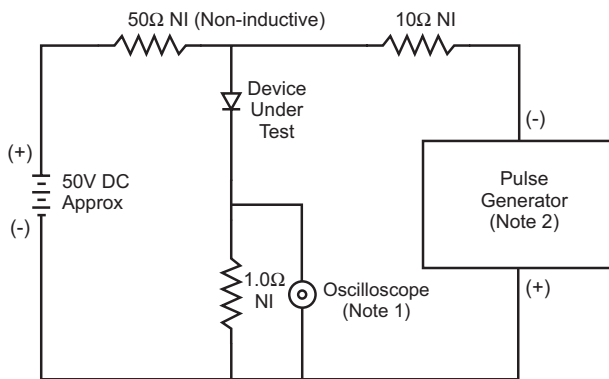
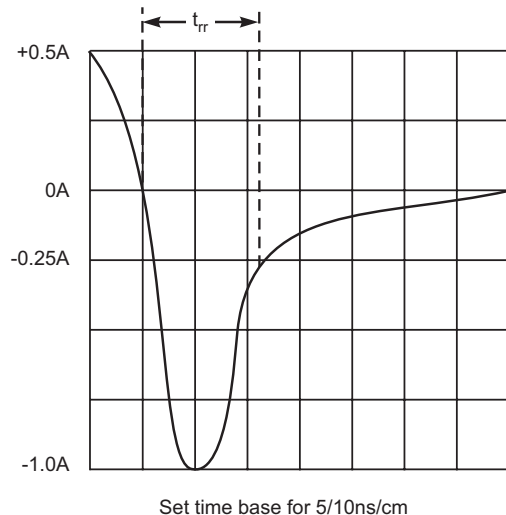


Fig. 4 Typical Junction Capacitance



- Notes:
1. Rise Time = 7.0ns max. Input Impedance = 1.0MΩ, 22pF.
 2. Rise Time = 10ns max. Input Impedance = 50Ω.

Fig. 5 Reverse Recovery Time Characteristic and Test Circuit



Set time base for 5/10ns/cm